

ANNEX A -BILL OF QUANTITIES (BOQ) AND TECHNICAL DRAWINGS

Project: Fabrication, Transportation and Installation of Prefabricated Office Caravans in Gadaref (Typical Prefab Caravan Unit with 6.25mX3.75m each)

Location: HAC office Compound, Gedaref State, East Sudan

Notes:

1. All work items should be done according to approved technical standards and specifications and should be approved by UNHCR supervising Engineer or it's partners

2. All materials and items must be NEW from best types and qualities

3. The contractor shall provide samples for all materials to be used in the project before using them in order to get approval from UNHCR supervising Engineer or it's partners

4. The contractor shall provide all required manpower, transportation, equipment, tools and machinery for project implementation.

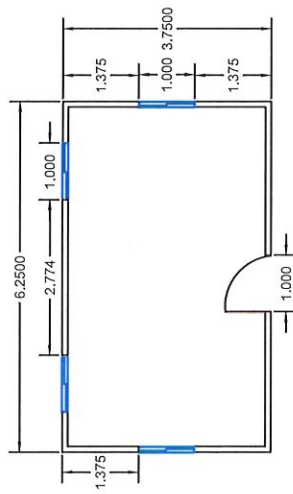
| No. | Description | Unit | Qty |
|---|--|------|-------|
| 1: Foundation Civil Works: | | | |
| 1.1 | Supply materials, equipment and manpower and construct containers/caravan sitting blocks(10 footing for each) and doors steps(3 steps total of 45cm, RCC with ratio 1:2:4, 45X45X70cm on well compacted approved selected material including site preparation, earth works, reinforced concrete works and all fixing accessories to insure caravan stability and safety during heavy rains and wind-storms | m3 | 1.72 |
| 2: Prefabricated Accommodation Caravan | | | |
| Fabricate, transport and install a complete one unit prefabricated caravan of 6.25x3.75 m, high 2.7 at the front side and 2.15 m at the back site to maintain proper slope, with PVC door and sliding Windows 6 per room with mosquito net as per the following specifications: | | | |
| 2.1 | Floor: Prefabricated Iron frame structure for caravan base size (6.25x3.75m), made from square-shaped galvnised steel hollow pipe size (15cmX 15cm, 3mm thick) and rectangular shape hollow steel pipe (10cm X 5cm, 3mm) welded with the frame (50cm c/c) in both directions with waterproof plywood block 18mm thickness for floor, covered by vinyl sheet 2mm (with no joint one peice cut). | m2 | 23.44 |
| 2.2 | 2- Walls: using rectangular shape hollow steel pipe (10cm * 10 cm * 2mm) for columns and Sandwich panel walls 5cm thickness with Polyurethane insulation 40kg/m ³ , outer and inner surfaces covered with Ral 9002 electrostatic painted steel sheet. | m2 | 54.00 |
| 2.3 | 3- Roof: grooved seam Sandwich panel 7cm thickness with Polyurethane insulation 40kg/m ³ , outer and inner surfaces covered with Ral 9002 electrostatic painted steel sheet, including compact rain water drainage system. | m2 | 29.74 |

ABCD
1

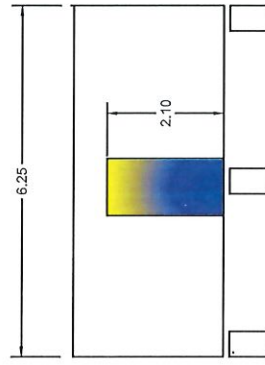
| | | | |
|------------------------------------|---|------|------|
| 2.4 | Doors: Supply and fix complete standard PVC door 100x210 cm for the caravan including locks and all accessories | Pcs | 1.00 |
| 2.5 | Windows: Supply and fix complete standard PVC slide windows of 100cmx80cm for the caravan, with 5mm glass including locks, Mosquito mesh and all accessories (2 windows at the back and 1 on each side) | Pcs | 4.00 |
| | TOTAL | | |
| 3: Electrical Installations | | | |
| 3.1 | Provide and install flush mounted circuit breaker 6 line steel enclosure (IP40-IP40) with lockable door and corrosion resistant paint, top/bottom cable entry | No | 1.00 |
| 3.2 | Provide materials and install 16A/1P socket outlet fed through PVC insulated conductors of 3x2.5mm ² | No | 4.00 |
| 3.3 | Supply and fix fluorescent lamp 10/16A, 250V flush mounted light single switch, fed through PVC insulated conductor of 3 x 2.5mm ² inside thermo plastic conduit of ϕ 16mm, connected and tested. | No | 2.00 |
| 3.4 | Supply and fix flush mounted single switch of 16A including wires, flexible cables, conduits, boxes, mounting materials and accessories. | No | 2.00 |
| 3.5 | Supply and installation of air conditions, 18000 BTU | No | 1.00 |
| | TOTAL | | |
| | Total Price for One Typical Prefab Caravan Unit (USD): | Unit | 1.00 |
| | Total Price for Three Typical Prefab Caravan Units (USD): | Unit | 3.00 |

ABD
2

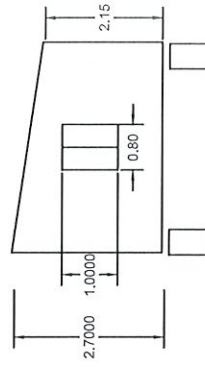
Technical Drawing



Prefabricated Office Caravans
(Typical Prefab Caravan Unit with 6.25m x 3.75m each)



Front View



Side View

Hand
Drawn

Technical Drawing

